

Rich, Native MongoDB BI for Enterprise Teams



Native BI software for MongoDB. Qarbine™ is built to facilitate BI across enterprise teams from the developers who want to leverage existing investments and skills, to the users who want to do live analysis and formatting.



Native Support

- Maintains document model integrity
- Can reuse existing business objects written in popular languages
- Include hybrid data and objects in a single BI analysis
- Qarbine services can be called directly from MongoDB Stitch
- Can consume RESTful services during report generation
- Deploy using Docker, AWS AMI, or Kubernetes
- Embed visualizations from MongoDB Charts
- Familiar Microsoft Office interface and over 150 built-in functions
- Integrates with best-of-breed analytic services

Leverage existing enterprise investments

- Reuse existing business objects and their functions
- Scales to a wide range of platforms
- Include hybrid data and RESTful services in a single analysis
- DBA and developer expertise packaged in reusable queries
- Detailed data reporting features complement summary visualization tools

Supports the needs of different groups

IT and Developers

- Set up prebuilt and index-aware analysis which can include a prompt for runtime values
- Embed Qarbine in enterprise applications
- Includes DBA analysis reports



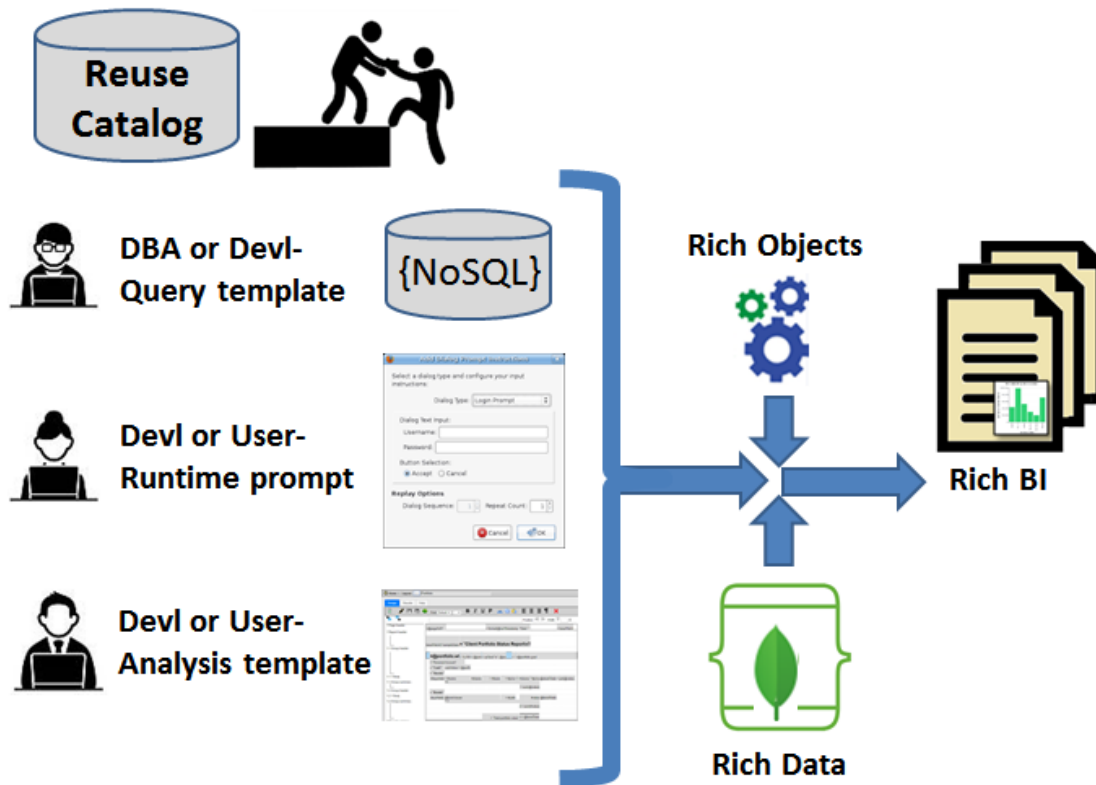
End Users

- Use a fill-in-the-blank interface for smart query generation
- Reuse IT authored queries and focus on detailed analysis
- Export analysis directly to Excel

Deep support for native MongoDB integration

- The Qarbine catalog is stored within MongoDB, enabling built-in replication and support for catalog and analysis sharding for performance and GDPR
- Full support for Atlas including read and hidden replicas
- MongoDB authorization policies enforce all Qarbine catalog and data access interactions

Qarbine Rich, Native BI for Enterprise Teams



Naturally Handles the Document Model

Oct 28, 2018 Page 1 of 2

Goldman Sachs Client Portfolio Status Report
Thomas Smith, Sr. Advisor

John Doe Personal Account is 910 Marcell Street Chicago, IL 80512 An asset mix seeking income and the potential for capital appreciation which can withstand moderate market fluctuations.

Cash	\$45,000			
Stocks				
958	Coca-Cola	500	\$45.00	\$22,500.00 11%
997	Merck & Co.	1,500	\$55.00	\$82,500.00 40%
82	Pfizer	2,500	\$35.00	\$87,500.00 42%
27	Proctor and Gamble	200	\$80.00	\$16,000.00 8%
				\$208,500.00
Bonds				
440	US Treasury 10 year			\$40,000.00 35%
471	US Treasury 15 year			\$50,000.00 43%
409	US Treasury 30 year			\$25,000.00 22%
				\$115,000.00
				Total portfolio value \$368,500.00

Jane Smith Personal Account is IRA 50 South Ave. Apt 600 Los Angeles, CA 90210 An asset mix seeking aggressive growth which can tolerate wide fluctuations in market values.

Cash	\$20,000			
Stocks				
562	Alphabet			\$61,000.00 45%
471	Amazon			\$20,000.00 28%
348	Apple			\$10,000.00 18%
440	Netflix			\$7,000.00 11%
				\$98,000.00
Bonds				
440	2030 New York State Thruway Authority			\$40,000.00 62%
409	2025 California Municipal biz_model_Bond			\$25,000.00 38%
				\$65,000.00
				Total portfolio value \$483,000.00



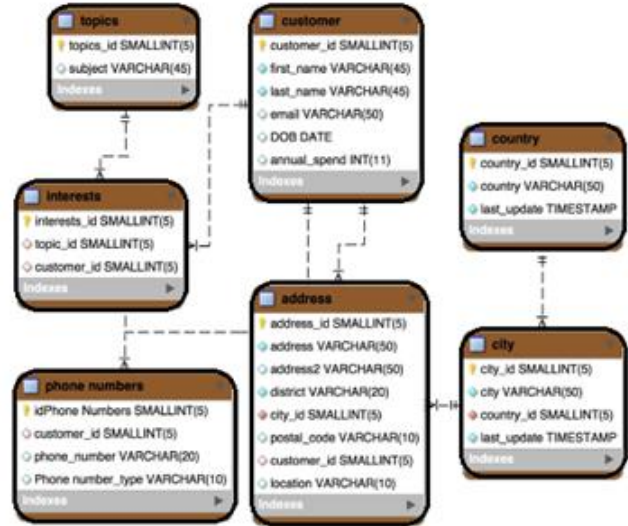
Qarbine Supports:

- 1) Document arrays
- 2) Heterogeneous sibling lists
- 3) Summary calculations
- 4) Custom graphics and charts
- 5) Business object functions
- 6) Interactive elements

Rich Documents

```
{
  "_id" : ObjectId("5ad88534e3632e1a35a58d00"),
  "name" : {
    "first" : "John",
    "last" : "Doe" },
  "address" : [
    { "location" : "work",
      "address" : {
        "street" : "16 Hatfields",
        "city" : "London",
        "postal_code" : "SE1 8DJ"},
      "geo" : { "type" : "Point", "coord" : [
        51.5065752, -0.109081 ]}},
    (...)
  ],
  "phone" : [
    { "location" : "work",
      "number" : "+44-1234567890"},
    (...)
  ],
  "dob" : ISODate("1977-04-01T05:00:00Z"),
  "retirement_fund" : NumberDecimal("1292815.75")
}
```

SQL



Reuse Your Business Objects for BI

